

Item Code and Description

- a. TB5936-TR-S
- b. 59" × 36" TrueDEK Classic tub replacement shower redeptor

General Product Description

- a. prefabricated, tileable, structural, pre-sloped shower receptor
- b. cover with decorative tile, stone, or weldable resilient flooring

Physical Characteristics

- a. made of stone resin
- b. extra wide 36" platform
- c. spans 16" o.c. joist systems
- d. edges are 1" thick
- e. drain hole diameter is 6¼"
- f. four gradient planes
- g. gradients are 2% per foot or greater — varies due to length of pitch
- h. drain hole positioned near end of foundation to match typical alcove bathtub drain location
- i. perimeter has leveling rim
- j. solid core; underside has no ribbing
- k. color: gray
- l. weight: approximately 70 lbs.
- m. made of 50% recycled material; 100% recyclable

Performance Characteristics

- a. pre-pitched foundation for shower construction
- b. install on wood or engineered joist systems, on subfloor, or on concrete
- c. use for right and left hand installations
- d. cut and drill as needed with standard power tools
- e. may be trimmed on three sides (keep cuts at least 6" from drain hole)
- f. rated to carry 800 lb. load when installed on proper joists spaced 16" o.c. supplemented with perimeter and drain hole blocking (increase load capacity with additional blocking and support)
- g. complete installation requires a Classic Drain Assembly and waterproofing materials
- h. remove tile, redo waterproofing, and re-tile without damaging foundation

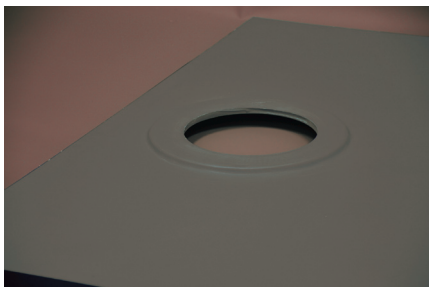
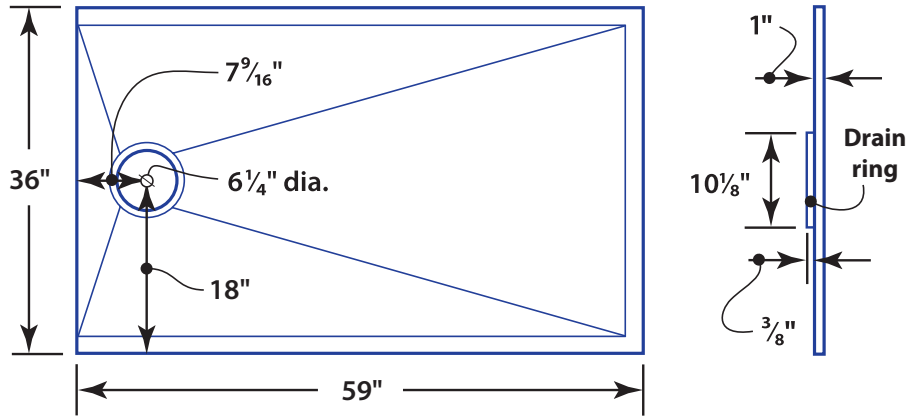
Compliance

- a. ICC PMG-1334 lists compliance with:
 1. 2015, 2012 and 2009 International Residential Code® (IRC)
 2. 2015, 2012 and 2009 International Plumbing Code® (IPC)
 3. 2015, 2012 and 2009 Uniform Plumbing Code® (UPC)
 4. 2010 and 2005 National Plumbing Code of Canada (NPC)
 5. IAPMO PS106-2015e1 for prefabricated, tileable shower receptors
 6. CSA B45.5/IAPMO Z124-2011, Plastic Plumbing Fixtures
- b. QAI Laboratories test report no. RJ4241-1
 1. meets conditions of classification for 30-minute flame spread index and smoke developed index per ASTM E84 requirements



Other Information

- a. Nicholls & Clarke limited lifetime warranty



Drain hole reinforcement ring on underside of base.

Classic tub replacement shower base.

