

Origins Wall Panels



Product Overview

Origins wall panels are designed for internal use, both in wet and dry rooms in commercial, domestic and public areas. They are predominately used in bathrooms, wet rooms, shower enclosures and areas that are exposed to water. They can also be used in several other applications requiring hygienic wall cladding.

Features:

- + Available in 16 contemporary finishes
- + High pressure laminate faces on WPS plywood substrate
- + Each finish is available in three sizes: 23.62" (1.97 ft), 35.43" (2.95 ft) and 47.24" (3.93 ft) square edge
- + All wall panels are supplied 0.43" thick
- + Minimal time and equipment required for installation
- + Hard wearing structural grade material
- + Multiple trims available
- + Low maintenance bathroom solution

Benefits

- + Add contemporary style to your space with a wide choice of finishes inspired by the latest interior design trends
- + The design is infused with phenolic and melamine resins, dried and compressed to form a hard wearing high pressure laminate coating
- + Origins incorporate a tongue and groove click system providing a subtle, seamless finish and is an alternative to installing two panels with a straight joint profile
- + Quick and easy to fit with the items in your toolbox. No specialist skills or equipment needed to install
- + Wall panels are made of structural materials, which means fixtures such as shower seats and grab rails can be fitted securely, without impacting weight load
- + A wide variety of trims are available, offering a solution to any installation challenge you may face
- + Maintenance free, no need for additional grouting



Sizes

Origins wall panels are supplied in an 0.43" thickness in three standard sizes:

94.48" (7.9 ft) x 23.62" (1.97 ft)

T&G design

22.8" (1.9 ft) actual panel width

94.48" (7.9 ft) x 35.43" (2.95 ft)

T&G design

34.64" (2.9 ft) actual panel width

94.48" (7.9 ft) x 47.24" (3.93 ft)

Straight edge

46.45" (3.87 ft) actual panel width

Origins wall panels can also be cut to specific sizes to suit the customers' requirements.

Weight

Plywood – 8 kilos per m²

94.48" x 23.62"	26.45 lb (12 kg)
-----------------	------------------

94.48" x 35.43"	39.68 lb (18 kg)
-----------------	------------------

94.48" x 47.24"	52.91 lb (24 kg)
-----------------	------------------

Construction

Origins wall panels are manufactured using a 5-layer plywood core. The boards are bonded to HPL (high pressure laminate) to the front face and a backing HPL to reverse. The core is FSC certified and suitable for wet rooms, showers and areas with extremely high humidity.

The paper design is infused with phenolic and melamine resins, dried and compressed to form a hard wearing, stable coating.

Tolerances

- + Length +/- 0.05"
- + Width +/- 0.02"
- + Thickness +/- 0.02"
- + Difference from level +/- 0.007"
- + Curving Convex - 0.04"
- + Curving Concave - 0.08"

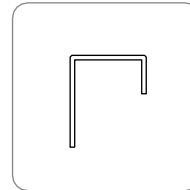
Fitting

Panels can be installed directly onto a concrete wall, plasterboard or over existing tiles. Timber framing may be required to achieve the flat surface required for fitting.

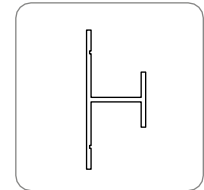
Installation

It is essential that any exposed core material on the panels is covered. This is achieved by using aluminium wallboard sections (profiles), which must be sealed before fitting. Any screws used must be counter-sunk anti-corrosive, and panels must be adhered with a high tensile adhesive. All joints, including between panels and profiles must be sealed using sealant.

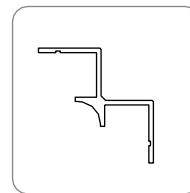
Profile Types (98.4" long)



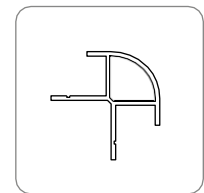
End Cap



Straight Join
(Continuous)



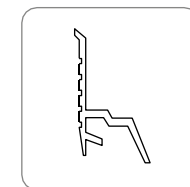
Internal
Corner



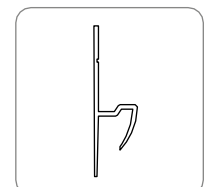
External
Corner

The above are available in Chrome, White, Black or SAA (satin anodised aluminium) as standard.

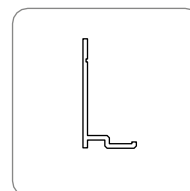
Profile Types (118.1" long)



PVC Bottom to
Tray Profile



PVC Bottom to
Vinyl Profile



Aluminium Bottom
Tile Profile

Cutting

Origins wall panels can easily be cut with either a hand tool or a suitable power tool. If using a handsaw then cut with the decorative side face up, and if using a circular saw then the decorative side should be face down.

Storage

Panels should be stored flat, covered and in a dry environment with the decorative surfaces facing each other. Being of timber construction, it is recommended that the panels are stored within the area they are to be fitted for at least 3 days prior to install.

Cleaning & Maintenance

The laminate surface is best kept clean by using a wet cloth and a mild detergent. On no account should scouring pads and harsh abrasive cleaning agents be used.

Guarantee



A 10-year warranty is offered on Origins wall panels, on the condition they have been fitted as per our recommendations and our detailed installation guidelines followed.



Black Bonito
(Stocked)



Cloudy Marble
(Stocked)



Grey Bonito
(Stocked)



Toffee Marble
(Stocked)



Travertino
(Stocked)



White Frost
(Stocked)



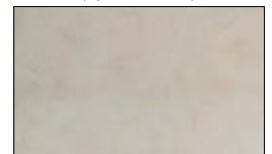
Alpino
(Special order)



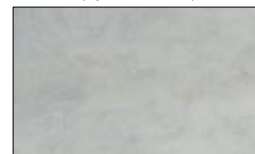
Aqua Bonito
(Special order)



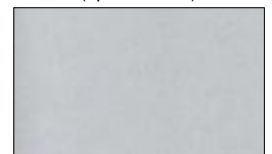
Arctic Shimmer
(Special order)



Beige Eiger
(Special order)



Blue Eiger
(Special order)



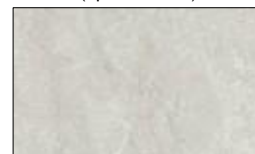
Moonlight Shimmer
(Special order)



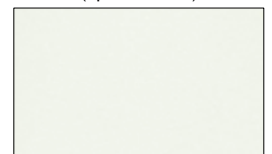
Oyster Marble
(Special order)



Twilight Marble
(Special order)



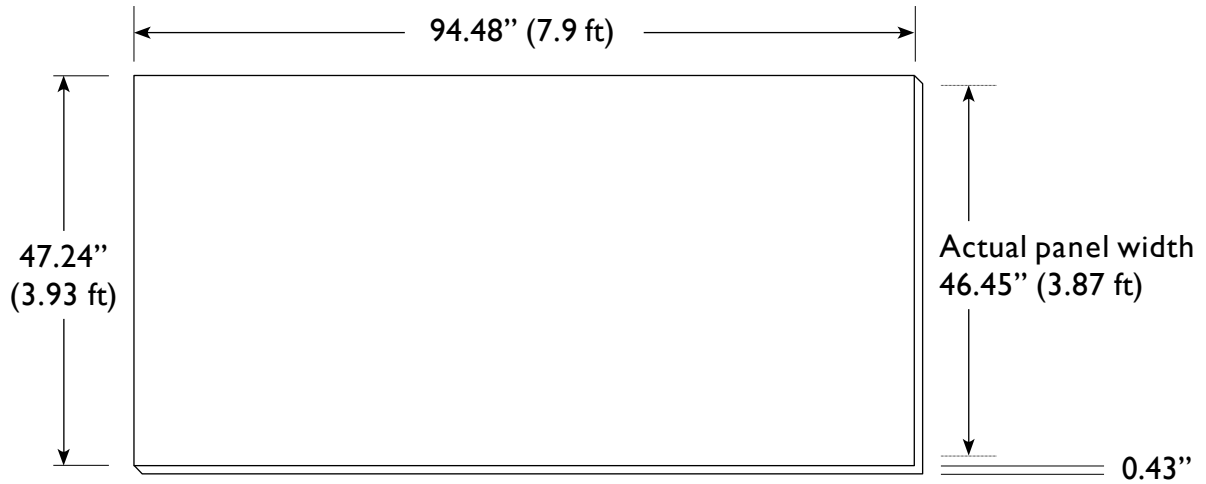
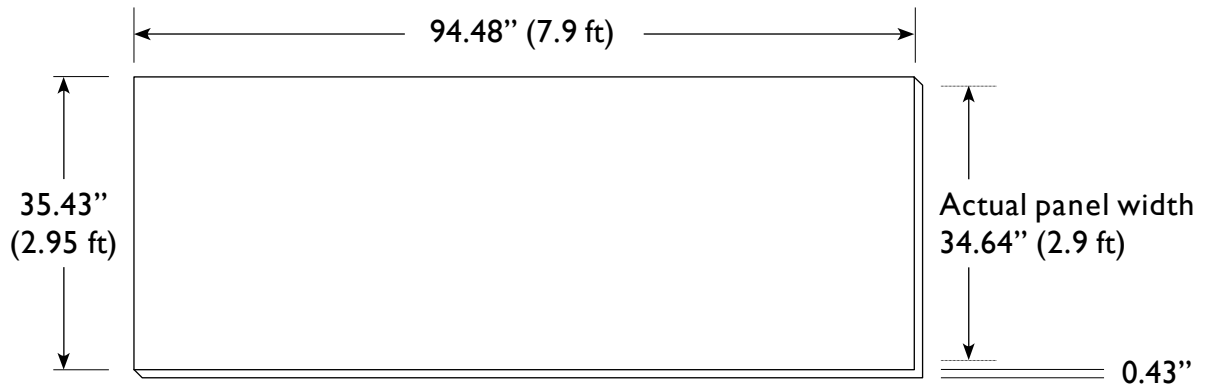
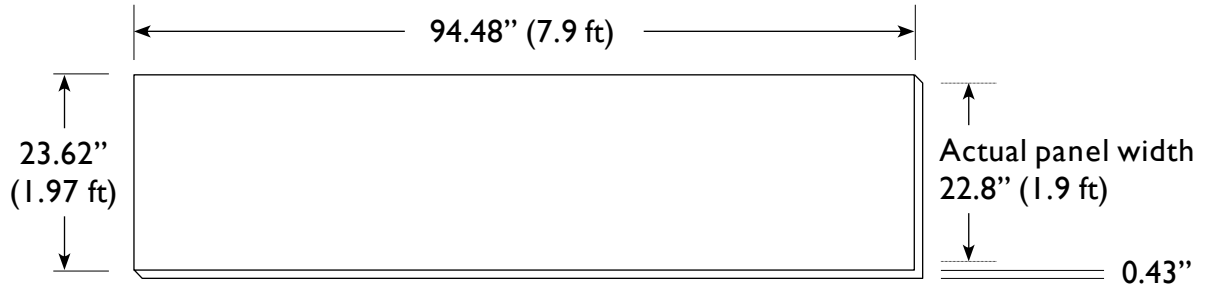
White Bonito
(Special order)



White Gloss
(Special order)

Special order wall panels have a 12 week lead time

Dimensions



Product Codes

0.43" Origin Wall panels

27722ALP	Alpino 47.24" square edged panel
27724ALP	Alpino 23.62" T&G panel
27723ALP	Alpino 35.43" T&G panel
27722AQB	Aqua Bonito 47.24" square edged panel
27724AQB	Aqua Bonito 23.62" T&G panel
27723AQB	Aqua Bonito 35.43" T&G panel
27722ATS	Arctic Shimmer 47.24" square edged panel
27724ATS	Arctic Shimmer 23.62" T&G panel
27723ATS	Arctic Shimmer 35.43" T&G panel
27722BGE	Beige Eiger 47.24" square edged panel
27724BGE	Beige Eiger 23.62" T&G panel
27723BGE	Beige Eiger 35.43" T&G panel
27722BKB	Black Bonito 47.24" square edged panel
27724BKB	Black Bonito 23.62" T&G panel
27723BKB	Black Bonito 35.43" T&G panel
27722BLE	Blue eiger 47.24" square edged panel
27724BLE	Blue eiger 23.62" T&G panel
27723BLE	Blue eiger 35.43" T&G panel
27722CLM	Cloudy Marble 47.24" square edged panel
27724CLM	Cloudy Marble 23.62" T&G panel
27723CLM	Cloudy Marble 35.43" T&G panel
27722GYB	Grey Bonito 47.24" square edged panel
27724GYB	Grey Bonito 23.62" T&G panel
27723GYB	Grey Bonito 35.43" T&G panel

27722MLS	Moonlight Shimmer 47.24" square edged panel
27724MLS	Moonlight Shimmer 23.62" T&G panel
27723MLS	Moonlight Shimmer 35.43" T&G panel
27722OSM	Oyster Marble 47.24" square edged panel
27724OSM	Oyster Marble 23.62" T&G panel
27723OSM	Oyster Marble 35.43" T&G panel
27722TFM	Toffee Marble 47.24" square edged panel
27724TFM	Toffee Marble 23.62" T&G panel
27723TFM	Toffee Marble 35.43" T&G panel
27722TRA	Travertino 47.24" square edged panel
27724TRA	Travertino 23.62" T&G panel
27723TRA	Travertino 35.43" T&G panel
27722TLM	Twilight Marble 47.24" square edged panel
27724TLM	Twilight Marble 23.62" T&G panel
27723TLM	Twilight Marble 35.43" T&G panel
27722WBO	White Bonito 47.24" square edged panel
27724WBO	White Bonito 23.62" T&G panel
27723WBO	White Bonito 35.43" T&G panel
27722WFS	White Frost 47.24" square edged panel
27724WFS	White Frost 23.62" T&G panel
27723WFS	White Frost 35.43" T&G panel
27722WHT	White Gloss 47.24" square edged panel
27724WHT	White Gloss 23.62" T&G panel
27723WHT	White Gloss 35.43" T&G panel

60" x 36" Origins Wall Kits - **Stocked**

OW6036-BKB	Origins Wall Panel kit in Black Bonito
OW6036-WFS	Origins Wall Panel kit in White Frost
OW6036-GYB	Origins Wall Panel kit in Grey Bonito
OW6036-TFM	Origins Wall Panel kit in Toffee Marble
OW6036-CLM	Origins Wall Panel kit in Cloudy Marble
OW6036-TRA	Origins Wall Panel kit in Travertino

60" x 36" Origins Wall Kits – **Special Order**

OW6036-ALP	Origins Wall Panel kit in
OW6036-AQB	Origins Wall Panel kit in
OW6036-ATS	Origins Wall Panel kit in
OW6036-BGE	Origins Wall Panel kit in
OW6036-BLE	Origins Wall Panel kit in
OW6036-MLS	Origins Wall Panel kit in
OW6036-OSM	Origins Wall Panel kit in
OW6036-TLM	Origins Wall Panel kit in
OW6036-WBO	Origins Wall Panel kit in
OW6036-WHT	Origins Wall Panel kit in

Product Codes

Profiles (for 0.43" Origin wall panels)

27730	Polished chrome silver end cap	
27731	Polished chrome silver external corner	
27732	Polished chrome silver H-section	
27733	Polished chrome silver internal corner	
27719	Satin anodised aluminium end cap	
27717	Satin anodised aluminium external corner	
27718	Satin anodised aluminium H-section	
27716	Satin anodised aluminium internal corner	
27720	Transeal profile	Coming Soon
27728	White end cap	
27727	White external corner	
27726	White H-section	
27725	White internal corner	
27725BLK	Black internal corner	
27726BLK	Black H-section	
27727BLK	Black external corner	
27728BLK	Black end cap	
27725BKB	Black Bonito aluminium internal corner	
27727BKB	Black Bonito aluminium external corner	
27728BKB	Black Bonito aluminium end cap	
27726BKB	Black Bonito aluminium H-section	
27725CLM	Cloudy Marble aluminium internal corner	

27727CLM	Cloudy Marble aluminium external corner	
27728CLM	Cloudy Marble aluminium end cap	
27726CLM	Cloudy Marble aluminium H-section	
27725GYB	Grey Bonito aluminium internal corner	
27727GYB	Grey Bonito aluminium external corner	
27728GYB	Grey Bonito aluminium end cap	
27726GYB	Grey Bonito aluminium H-section	
27725TRA	Travertino aluminium internal corner	
27727TRA	Travertino aluminium external corner	
27728TRA	Travertino aluminium end cap	
27726TRA	Travertino aluminium H-section	
27725TFM	Toffee Marble aluminium internal corner	
27727TFM	Toffee Marble aluminium external corner	
27728TFM	Toffee Marble aluminium end cap	
27726TFM	Toffee Marble aluminium H-section	
27725WFS	White Frost aluminium internal corner	
27727WFS	White Frost aluminium external corner	
27728WFS	White Frost aluminium end cap	
27726WFS	White Frost aluminium H-section	
27689	Wallboard Bottom onto Tray PVC	Coming Soon
27690	Wallboard Bottom onto Vinyl PVC	Coming Soon
27684	Wallboard Bottom to skirting Aluminium	Coming Soon