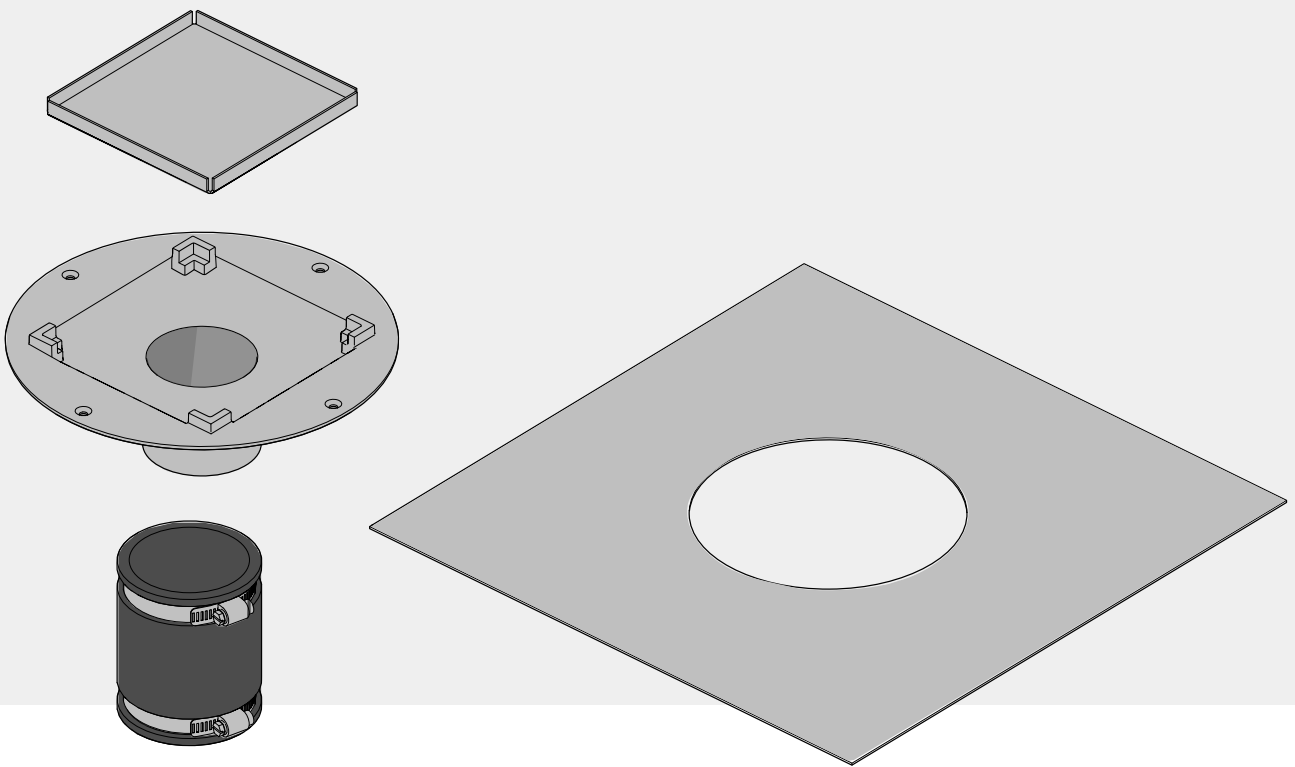


Classic Former Tile Waste

INSTALLATION INSTRUCTIONS

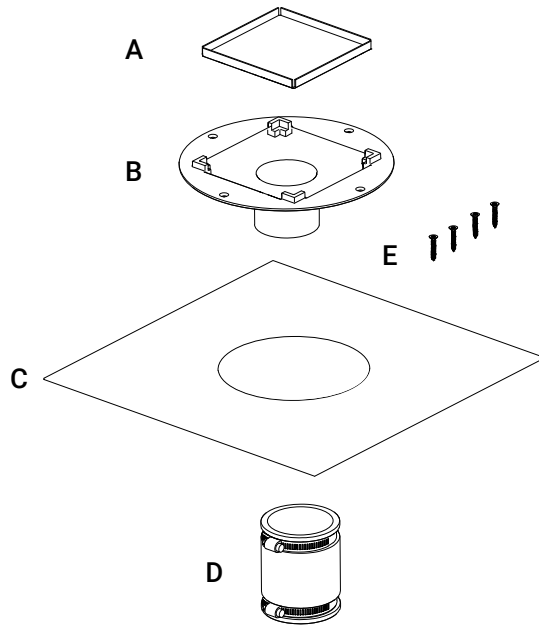


STOCK CODE
CD1260

Please read all instructions before installation and leave this document with the end user for future reference as it contains important warranty information

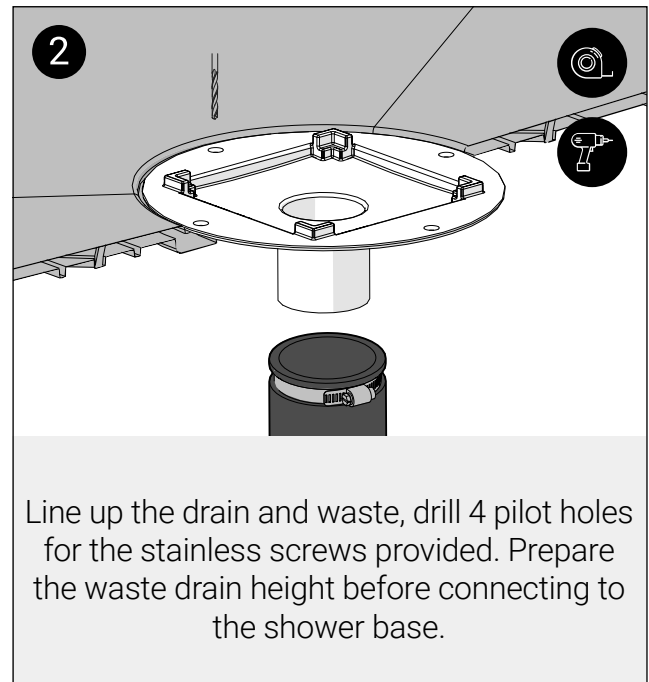
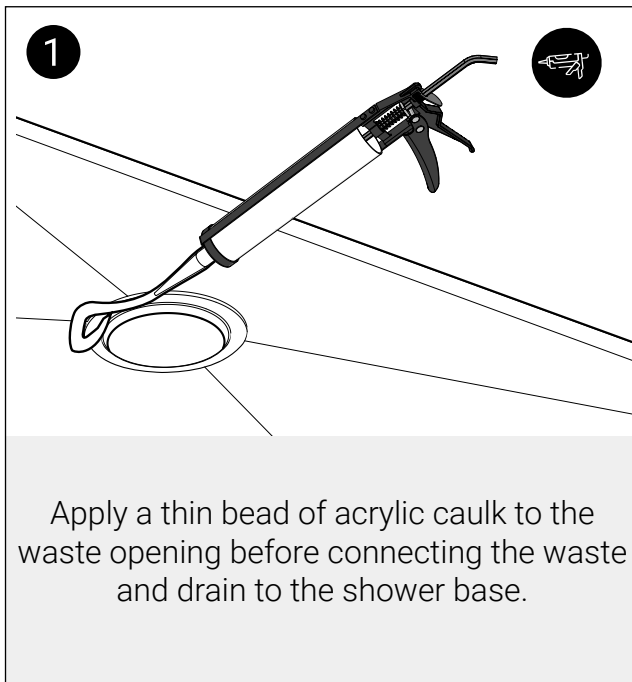
Important Information

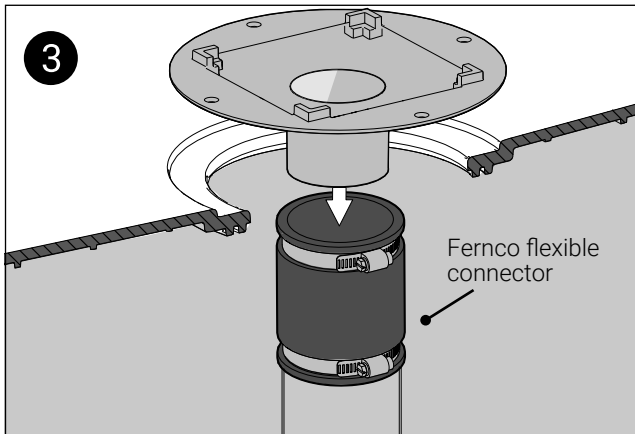
PARTS



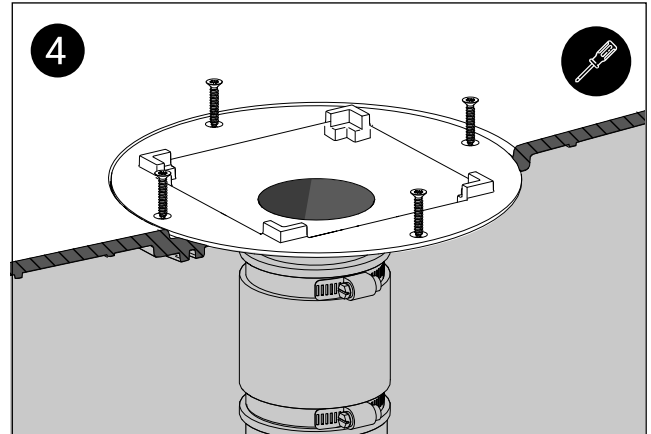
Parts	QTY
A Waste Tile Plate	1
B Waste Tile Holder	1
C Drain Gasket	1
D Fernco flexible connector	1
E No.8 x 1 inch Pozi csk head stainless steel self tapping screw.	4

Suitable for wooden and solid floor installations. Use these in accordance with the former instructions. Do not use silicone caulk as this does not bond with the waterproofing compound. Only use acrylic caulk in waterproofing areas.

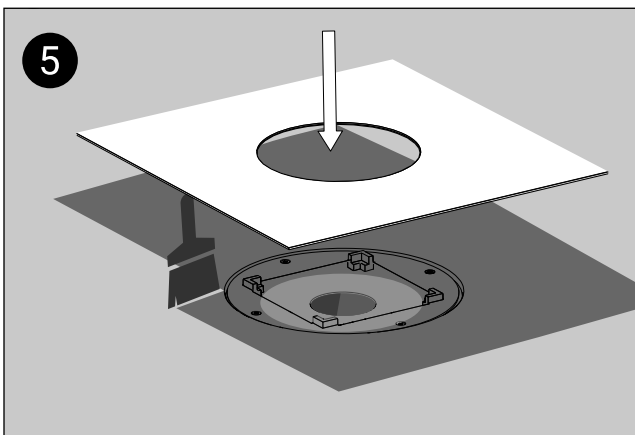




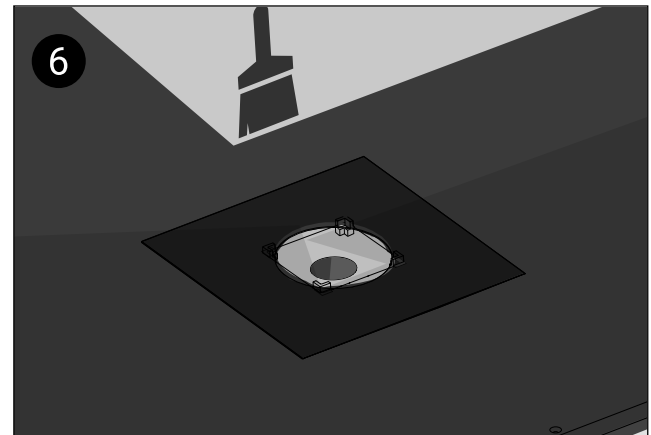
Connect the waste drain outlet pipe to the waste and test for any leaks before the next step.



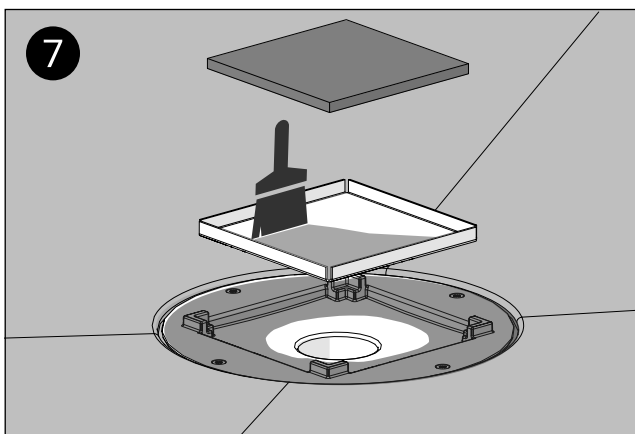
Firmly push the waste into position and screw the stainless steel screws into the shower base. Remove any excess caulk.



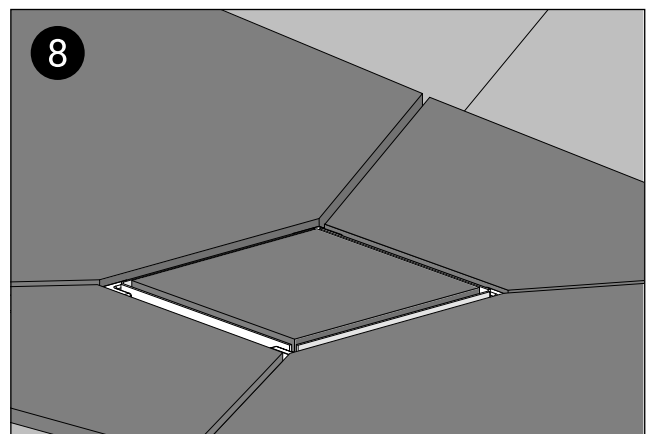
Cover the waste area in layer of waterproofing and firmly apply the gasket to the shower base and waste drain area.



Completely cover the gasket with another layer of waterproofing membrane and then proceed with covering all the shower base area and any edges.



Make sure the tile plate is clean and then apply a layer of waterproofing.



Finish with tiling, starting at the waste and moving outwards.

Contact Us



General Enquiries

1-715-743-2771
info@arcfirst.net

ARC

7 Tiff Ave,
Neillsville,
WI 54456

www.arcfirst.net

Follow us on Social:



Warranty

The warranty applies only to manufacturing or material defects, conditional on the one-time correct installation of the product.

Does not apply to:

- Inappropriate use or accidental damage.
- Damage or defects that result from incorrect installation.
- Lack of maintenance including the build up of grime or damage resulting from inappropriate cleaning.
- Damage or defects that result from repairs or modifications undertaken by unauthorised persons.
- This warranty excludes general wear and tear through usage and does not apply to surface finishes.

What to do if something goes wrong?

In the event that you should encounter a problem with this product, please contact your local installer and if this does not resolve the issue, then contact ARC who will provide further advice and, if necessary, arrange for a maintenance engineer to visit and report any issues. See the T&Cs on our website or our catalogue for further information. None of the foregoing affects your statutory rights.